

FluorChem FC3 System

SENSITIVE CHEMILUMINESCENT IMAGING

The FluorChem FC3 System provides a complete array of image acquisition modes for common fluorescent and chemiluminescent applications.



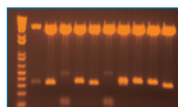
- Motorized optics and Automatic Image Capture Software provide ease of use when imaging
- Multiple lens options allow systems to be customized for specific applications
- Five-position filter wheel provides UV fluorescent imaging versatility
- System upgrades allow expansion of capabilities as application needs change



Chemiluminescent
Westerns



Colorimetric
Protein Gels



UV Fluorescent DNA
and Protein Gels



Colony Plates

AlphaView Software for FluorChem Systems

AlphaView Software is intuitive and easy to navigate for quantitative analysis. Application driven acquisition, experiment-based analysis protocols, and comprehensive annotation tools allow rapid generation of publication ready results and images.



FluorChem FC3 System Specifications

Feature	Description
Applications	
Application Types	Chemiluminescent, Colorimetric, UV Fluorescent
System Configuration	
Camera Resolution	1.4 Megapixels (1392 x 1040)
A/D	16-bit
Lens Options	20 mm, f/1.8 Fixed, Manual 12.5-75 mm, f/1.2 Zoom, Motorized
Pixels	6.45 x 6.45 μm
Filter Positions	5, Motorized
Upgrade Options	HD2
Size	20" W x 15" D x 39.5" H (51 x 38 x 100 cm)
Weight	100 lbs (45.4 kg)

FluorChem FC3 System Ordering Information

Part #	Description
92-15409-00 (110V) 92-15410-00 (220V)	FluorChem FC3 System with Motorized Zoom Lens 12.5-75 mm, f/1.2 Includes a 1.4 MP camera with 16-bit A/D, cooled to -30 °C absolute and regulated, orange filter; white light table, adjustable tray kit, 365/302 nm dual-wavelength, dual-intensity UV transilluminator; epi white lights, AlphaView FC3 Software and two stand alone licenses.
92-15407-00 (110V) 92-15408-00 (220V)	FluorChem FC3 System with Manual Fixed Lens 20 mm, f/1.8 Includes a 1.4 MP camera with 16-bit A/D, cooled to -30 °C absolute and regulated, orange filter; white light table, adjustable tray kit, 365/302 nm dual-wavelength, dual-intensity UV transilluminator; epi white lights, AlphaView FC3 Software and two stand alone licenses.
92-13633-00	FluorChem HD2 Upgrade for FluorChem FC3 Includes a 4.19 MP camera with 16-bit A/D, manual 50 mm, f/0.95 fixed lens, adjustable tray kit, camera mount and AlphaView HD2 Software.
10-14794-00	Computer Comes pre-installed with AlphaView System Software and is configured for optimal imaging system performance.

Cell Biosciences
 Cell Biosciences, Inc.
 3040 Oakmead Village Drive
 Santa Clara, CA 95051
 Toll-Free: (888) 607-9692
 Tel: (408) 510-5500
 Fax: (408) 510-5599
 www.cellbiosciences.com

© 2011 Cell Biosciences, Inc. Cell Biosciences, the Cell Biosciences logo, Compass, and NanoPro are trademarks and/or registered trademarks of Cell Biosciences, Inc.

95-2007-00