

red™

personal gel imaging at your fingertips.



out of the box, ready to go.

Combining advanced imaging technology with an integrated on-board computer in a compact unit, **red™** is ideal for 1-D gel imaging.

Every aspect of **red™** is designed for maximum ease of use. No instrument setup is required, just take it out of the box and plug the system into an outlet. Turn it on, the software automatically loads, and you are ready to image a range of fluorescent and colorimetric stained gels using its simple intuitive touch screen.

From simple installation to intuitive user interface, **red™** defines plug-and-play.

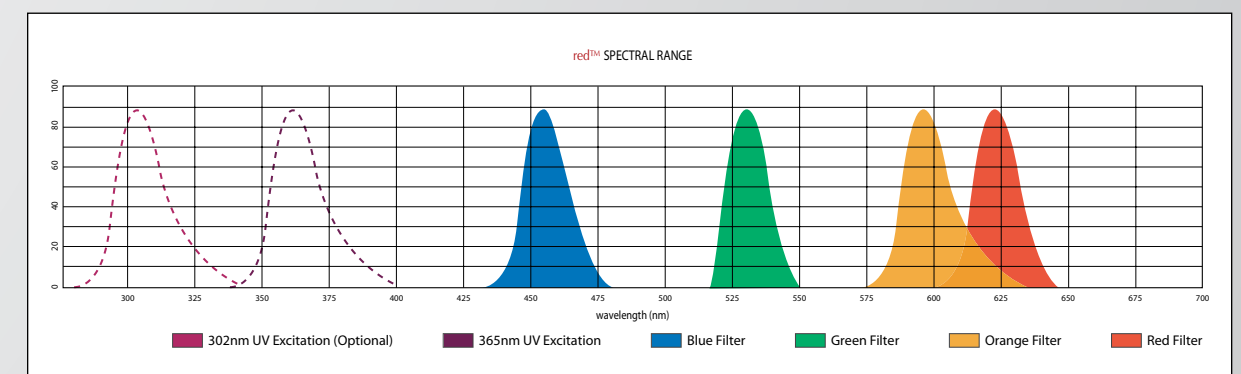
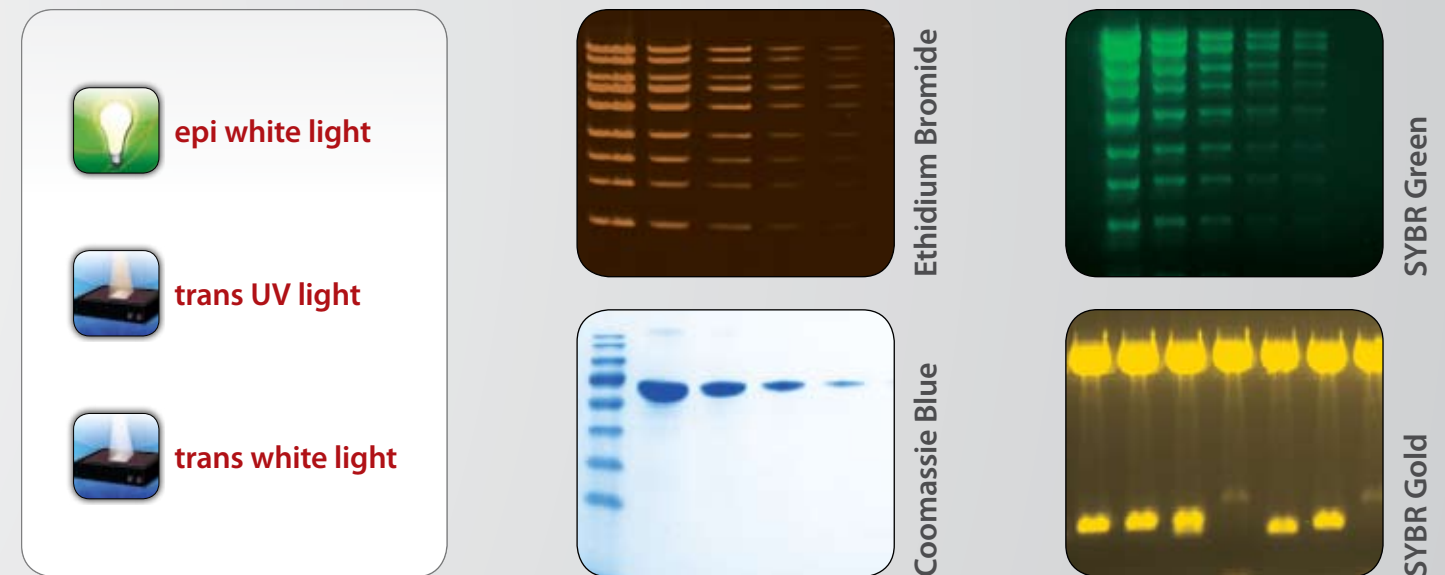
red's applications.

red™ boasts integrated UV transillumination and epi white light illumination sources and a 3-position filter wheel. These features are designed for exciting and imaging a wide range of UV fluorescent labels as well as white light applications.

Some common dyes and stains compatible with **red™** are:

- | | |
|------------------|--------------|
| Ethidium Bromide | SYBR® Safe |
| Coomassie Blue | GelStar® |
| Silver Stain | SYPRO® Red |
| SYBR® Gold | SYPRO® Ruby |
| SYBR® Green | Deep Purple™ |


Visit www.redimager.com and make **red™** a member of your lab today.




Graphical representation of red's Excitation and Emission Spectral Range.

how it works.

 **power switch** to wake red™ up, and auto-load the acquisition software.


 **1.4 million pixels, scientific grade camera** for high resolution images.


 **motorized optics** for touch screen imaging control.


 **epi white LED lights** for sample positioning, focus, and white light applications.


 **compact transilluminator** for excitation of common dyes and stains.


 **3-position filter wheel** provides dye flexibility for fluorescent applications.


 **8 inch touch screen** puts all imaging controls at your fingertips.

 **on board computer** eliminates requirement for an external computer.

 **network connection** for easy saving and transferring of images to a network location.

 **front USB port** for quickly saving images to a USB memory stick.

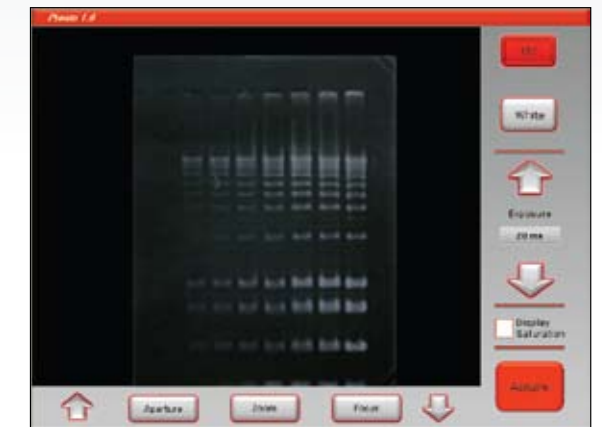
 **side USB port** directly connects any USB-compatible printer for quick printing.

 **small foot print** of 10.6 x 21.65 x 21.65 inches (WxDxH) makes it easy to fit into a compact lab space.

 **UV safety switch** protects users from accidental UV exposure when opening the door.



Easy Imaging with Pronto™ Software



1. Place your gel on the sample tray, and then inside the red™ imager.
2. Choose light source.
3. Using touch screen buttons, focus on the sample and expose.
4. When you have the perfect picture, hit Acquire. And you're done!

it's that simple!

“red™ ...is very easy to operate...”

N.D.
Molecular Biology Research Scientist
California Department of Public Health

“red™ was very easy to use for someone without any previous knowledge or access to a user’s manual. Modifying aperture, zoom, focus and saturation, as well as acquiring, saving, and printing images were very user friendly...”

K.M.
Research Associate
Advansta Inc.

“red™ is simple and sleek... It can easily fit into any lab space; it’s small foot print is definitely an added bonus! I loved the user interface, it was logical, easy to navigate and to the point, absolutely no guess work involved. With a USB interface, data transfer is a snap. **red™** is an amazing piece of technology and extremely adaptable to any lab space! I highly recommend it.”

K.F.
Research Associate III
Buck Institute for Research in Aging



Out of the box, plug into outlet



Place sample inside



Use touch screen to control exposure



One click acquire



Save to flash drive or network



Print image for lab notebooks

LEARN MORE!

Visit www.redimager.com





system configuration

part description	part number
red™ Includes: 1.4 million pixel sensitive sensor, motorized optics, three position filter wheel, Pronto Acquisition Software, EPI white lights, Orange filter, sample tray and UV transilluminator. Includes network port and built-in computer with 8" LCD touch screen and Windows XP Embedded Operating System.	92-14122-00 (110V) 92-14123-00 (220V)

accessories

part description	part number
AlphaView™ Stand Alone Software — for annotation and analysis of images including densitometry, colony counting and molecular weight determination.	91-13896-00
Green Filter with holder	91-14078-00
Blue Filter with holder	91-14079-00
Red Filter with holder	91-14066-00
White Light conversion screen	72-14067-00
Digital Thermal Printer	91-12999-00
Thermal Paper, High Contrast	P-150H
2GB USB flash drive	11-14117-00

camera specifications

Camera	1.4 million pixel, high resolution scientific grade camera
Optics	Motorized zoom lens
LCD Monitor	Integrated 8" touch-panel LCD screen

applications

Fluorescence	Dyes or stains such as Ethidium Bromide, SYBR® Green, SYBR® Safe, Hoescht Blue
Absorbance/ colorimetry	Coomassie blue or silver stained protein gels, colony plates

certifications

CE, cTUVus

product dimensions

Footprint	10.6 X 21.65 X 21.65 inches (27 X 55 X 55 cm)	Product Weight* 57.3 lb (26 kg)
-----------	--	---------------------------------

* add 1lb for packaging material



Innovations For Life Science Discovery

www.alphainnotech.com • 1.800.795.5556 • info@alphainnotech.com

Copyright © 2008 AlphaInnotech Corp. All rights reserved. red™, Pronto™ and AlphaView™ are trademarks of the Company. The Alpha Innotech Logo is a registered trademark of the Company. All other trademarks, service marks and tradenames appearing in this brochure are the property of their respective owners.